

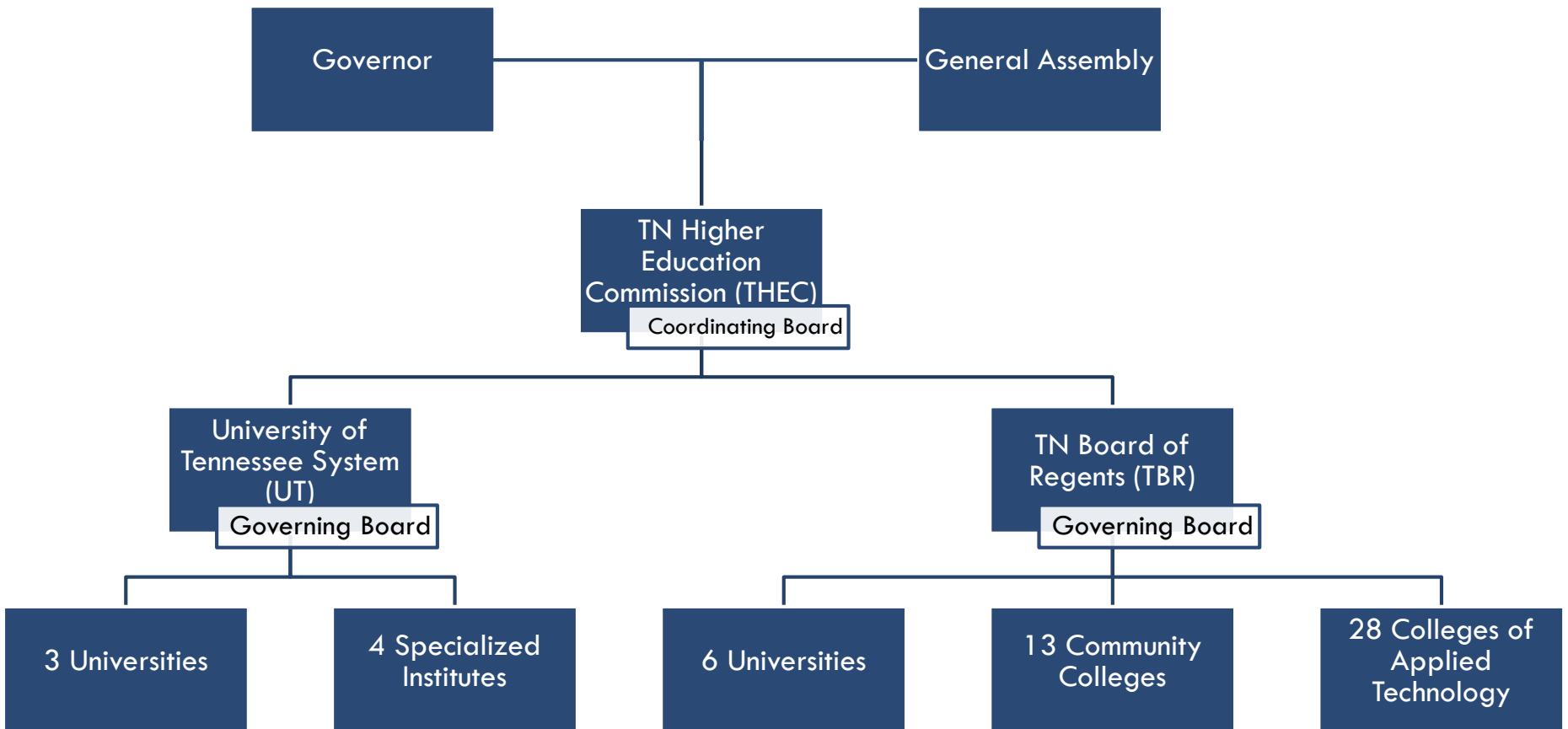


REMOVING ROADBLOCKS AND BUILDING BRIDGES:

Standardizing and Enhancing PLA
Policy and Practice in Tennessee
through Consensus



Higher Education in Tennessee: Structure



The Completion Agenda in TN: Background

- **Complete College Tennessee Act (CCTA) – 2010**
- Institution Missions Revised – 2010
- Master Plan Developed – 2010
- **Tennessee Transfer Pathways Developed – 2010-2011**
- **100% Performance-Based Funding Formula Developed and Implemented – 2010-2011**
 - ▣ **Tennessee Focus Groups and Adult Strategies Group**
- **Tennessee PLA Initiative – fall 2011-present**
 - ▣ **PLA Standardization – fall 2011-fall 2013**
 - ▣ **PLA Technical Assistance – spring 2014-present**
- **Drive to 55 – 2013-present**
 - ▣ **Adult-focused Initiatives – fall 2014-present**

Funding Formula Overview

□ Community Colleges

- ▣ 12 Credit Hours
- ▣ 24 Credit Hours
- ▣ 36 Credit Hours
- ▣ Dual Enrollment
- ▣ Associates
- ▣ Certificates
- ▣ Job Placements
- ▣ R&D Success
- ▣ Transfers Out with 12 Hours
- ▣ Workforce Training
- ▣ Awards per 100 FTE

□ Universities

- ▣ 24 Credit Hours
- ▣ 48 Credit Hours
- ▣ 72 Credit Hours
- ▣ Bachelor's and Associates
- ▣ Masters/Ed Specialist
- ▣ Doctoral/Law Degrees
- ▣ Research & Service
- ▣ Transfers Out with 12 Hours
- ▣ Degrees per 100 FTE
- ▣ Six-Year Grad Rate

Premiums: Adult and Pell-Eligible Students (40% Each)

The PLA Initiative

□ Goals:

- ▣ Reduce time-to-degree for adult students.
- ▣ Expand access to and options for PLA to adult learners in all Tennessee colleges and universities
- ▣ Use PLA as an incentive for adults to return to school and as a tool to pursue increased degree attainment
- ▣ Help institutions implement and execute their PLA programs more effectively and achieve their goals

□ Focus:

- ▣ Increasing consistency
- ▣ Increasing access
- ▣ Increasing awareness

Tennessee's Approach to PLA

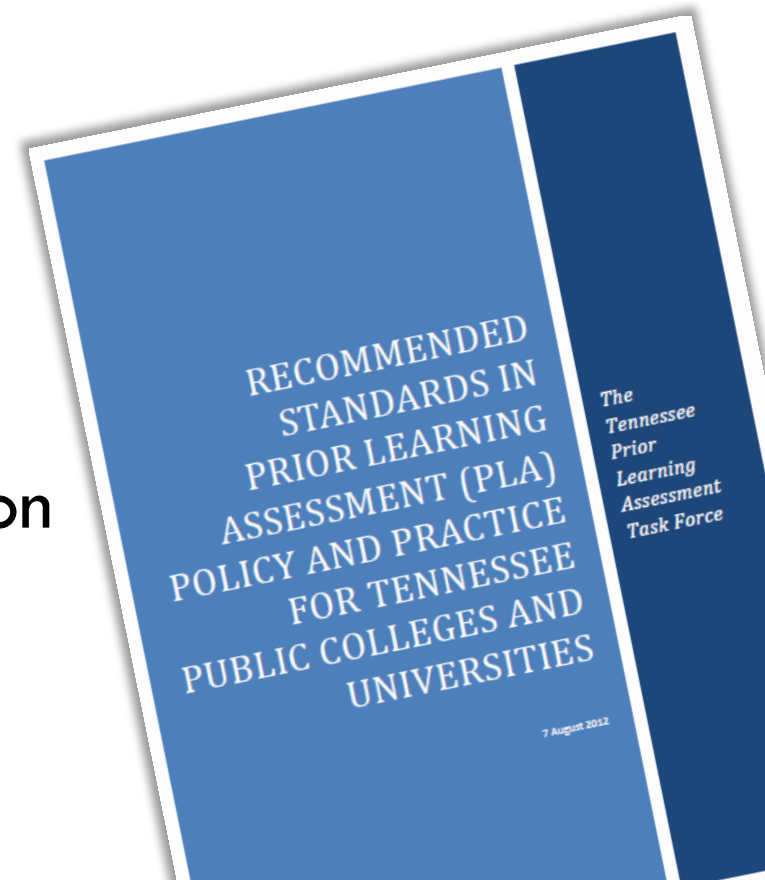
- Workforce Outreach
- Central Website and Statewide Marketing
- Trainings
- PLA Task Force
- Statewide PLA Standards
- Campus Capacity Building and Resource Development
- Campus Technical Assistance
- Campus and System Outreach

Tennessee PLA Task Force

- 21 of 22 public institutions
 - ▣ Voluntary
 - ▣ Diverse
 - ▣ Charged with drafting the Standards
- Subcommittees for different subjects
 - ▣ Transcription and Transfer
 - ▣ Structures
 - ▣ Outreach and Communications
 - ▣ Finance
 - ▣ Student Support

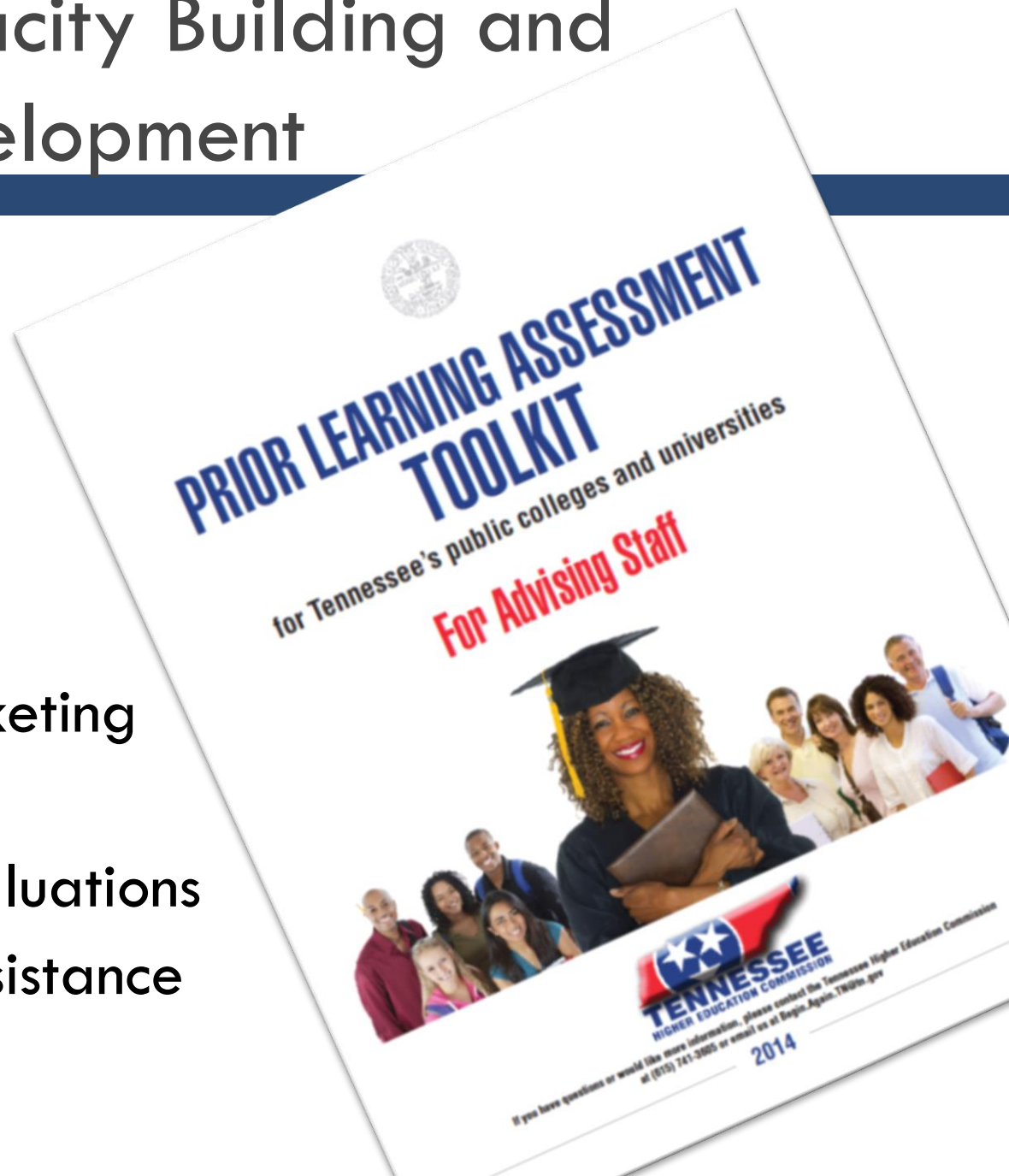
Highlights of TN PLA Standards

- Value Statement
- Standards for Awarding Credit
- Academic Quality and Access
- Internal Procedures
- Portfolio-specific Standards
- Transfer and Transcription
- Credit-by-exam standardization
- Tracking



Campus Capacity Building and Resource Development

- PLA Toolkit
- Orientation Marketing Materials
- PLA Program Evaluations and Technical Assistance



Campus Technical Assistance

- ▣ **Increasing demand** by students
- ▣ **Aligning current institutional and departmental policies** with PLA Standards and best practices
- ▣ **Addressing faculty concerns** and awareness
- ▣ **Promoting PLA as an integral part** of some degrees and a default way of awarding credits

Campus and System Outreach

- Direct messaging
 - ▣ Faculty and staff
 - ▣ Professional groups
 - ▣ Systems councils
- Campus champions and advocates
- Surveys
- Student Outreach

Panelists

- **Wilson Finch** – Assistant Director for Postsecondary Completion Initiatives, Tennessee Higher Education Commission – wilson.finch@tn.gov
- **Gloria Gammell** – Program Manager, Academic Affairs & Student Success, University of Tennessee System, Kingsport Center for Higher Education – ggammell@tennessee.edu
- **Dick Irwin** – Interim Vice Provost, Academic Innovation & Support Services, University of Memphis – rirwin@memphis.edu